



Ian Coles, TRICS Project Manager, JMP Consultants Limited

THE 2011 TRICS DATA COLLECTION PROGRAMME



2011 Data collection programme

- Size of programme
 - Method of programme determination
 - Survey targets by region
 - Survey targets by development type
 - The data collection process
- 

Size of 2011 programme


The 2011 TRICS data collection programme consists of 220 days of transport surveys across a wide variety of land use categories.

There will be 100 manual classified traffic counts, and 120 full multi-modal surveys.





Method of programme determination

- Feedback via TRICS User Survey
 - Assessment of regions
 - Assessment of development types
 - Traffic/multi-modal split
 - Targets of surveys by region and development
 - Programme agreed with Consortium
- 

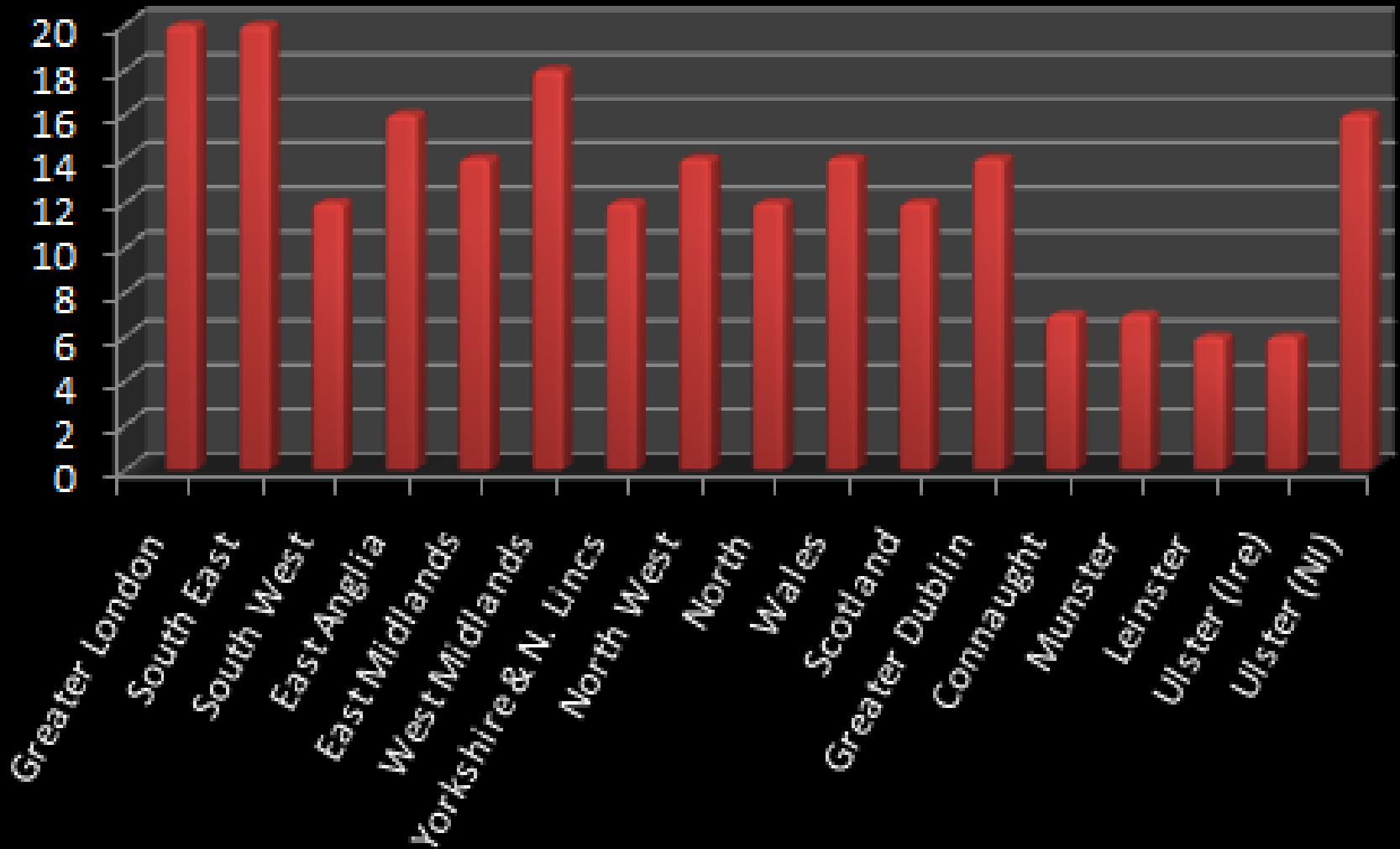
TRICS survey regions

The annual TRICS data collection programme is split between 17 regions across the UK and Ireland.

Each region has its own separate traffic & multi-modal survey schedule



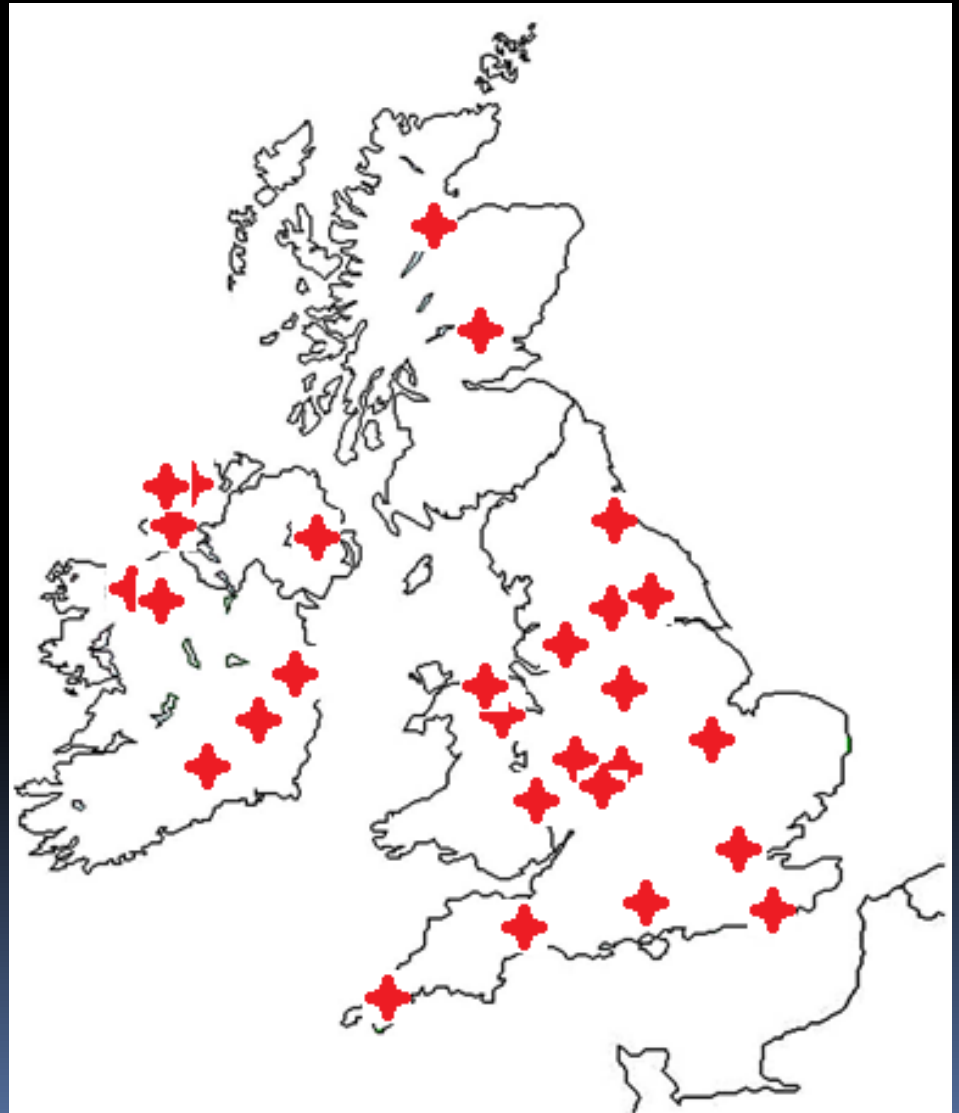
Survey targets by region



Example of regional spread - 2011

Coverage of TRICS surveys across the regions shows data being collected in a substantial number of towns and cities across the UK and Ireland.

This map displays the majority of areas being covered by surveys this year.

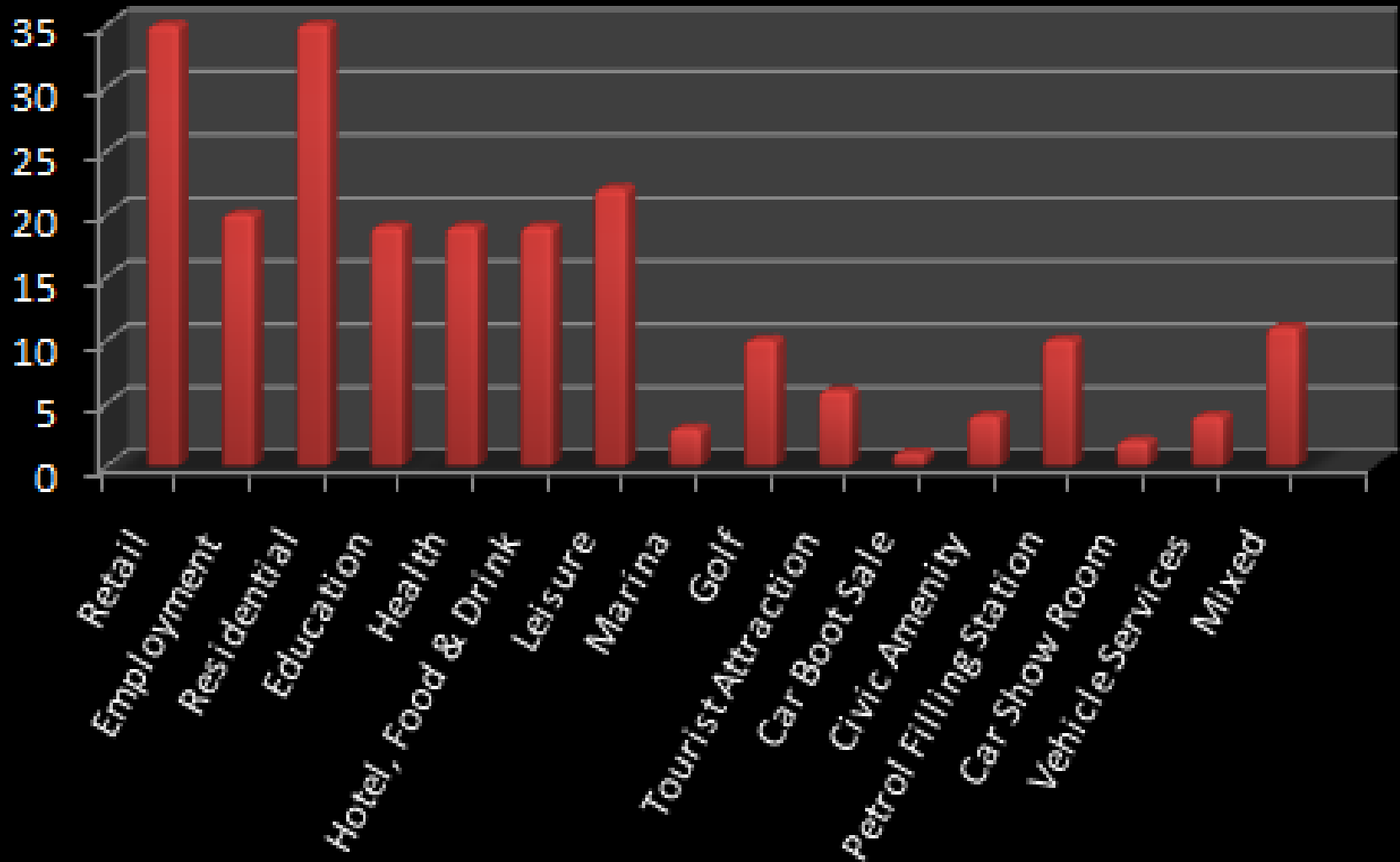




Surveys by development type


- 110 Land use categories in TRICS
- 64 categories being covered in 2011 programme
- Land uses classified by Highest Priority, High Priority, and Regular Priority

Surveys by development type

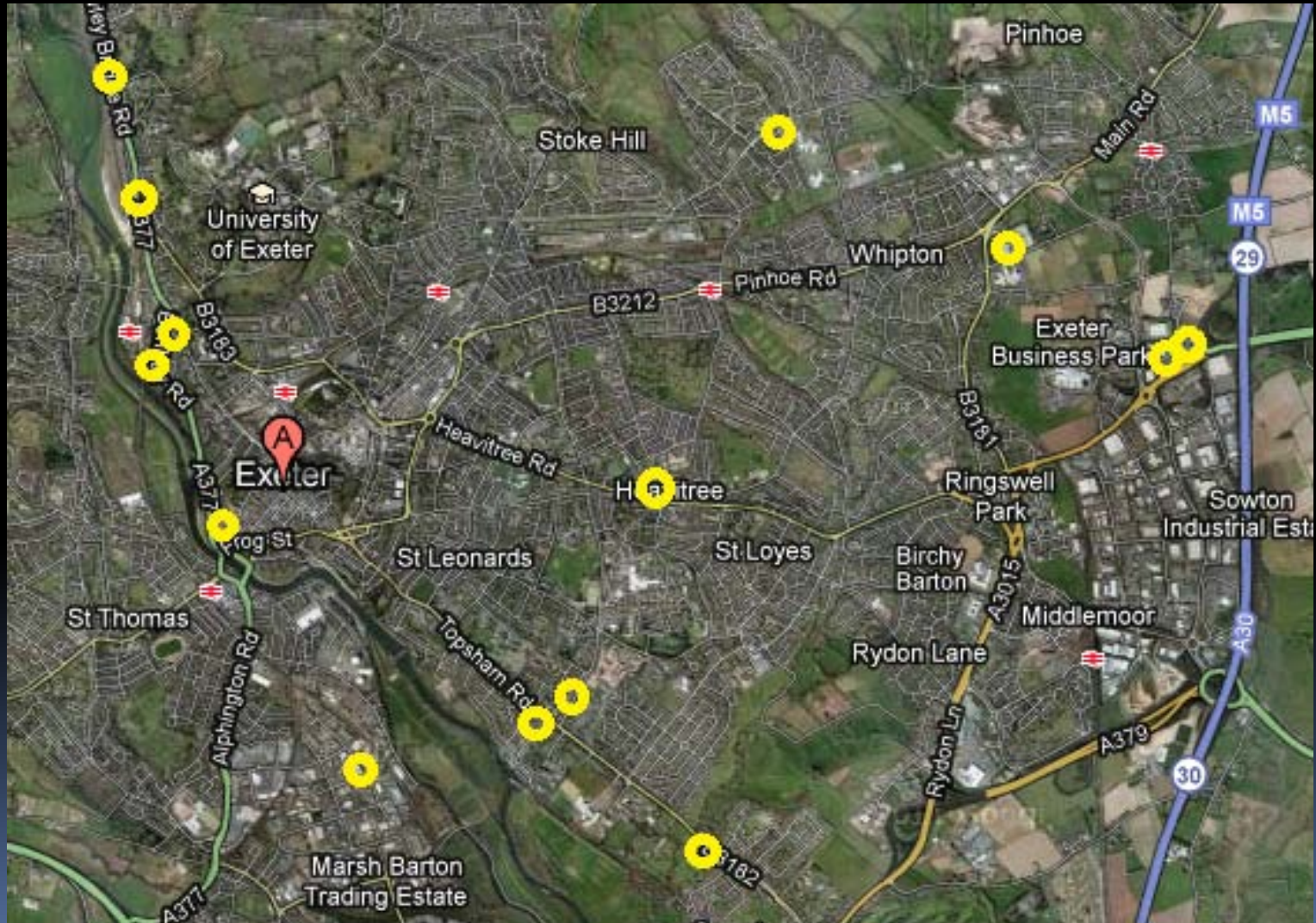




The data collection process

- Site visits
 - Production of survey specifications
 - Obtaining survey permissions
 - Regional tender process
 - Undertaking of surveys
 - Data supply, input and validation
- 

Site visit locations: Exeter



Site visits to survey specifications

Using the TRICS multi-modal methodology, site visit notes are written up into our comprehensive survey specifications, which provide detail on individual enumerator locations and count/interview instructions.



TRICS® Multi-Modal Survey Specification 2011


Region 3: South West **Specification Code: 2011/SW/L2/?**

Land Use & Location

TRICS® land use	01/A (Food Superstore)
Site name:	Sainsburys
Street/Road name:	Hill Barton Road
Area/District:	
Town/City:	Exeter
Postcode:	EX1 3PF

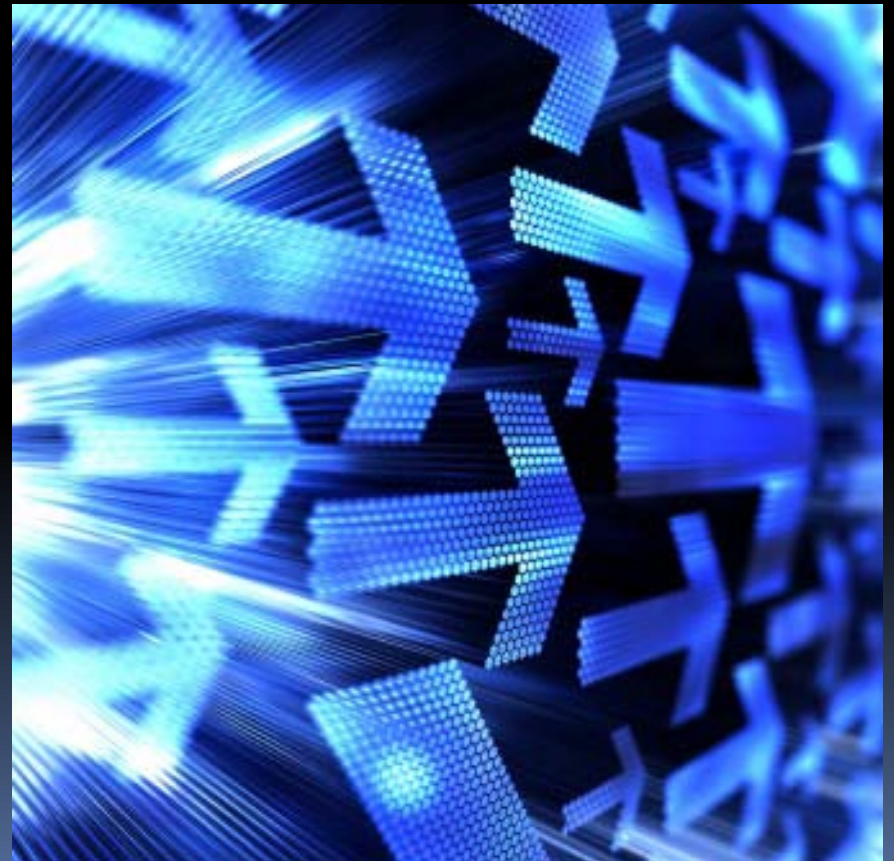


Permissions and tender process

- Permissions gathered from site owners/operators/local authorities
 - Production of tender documents detailing requirements of Level 1 and Level 2 surveys
 - Two week period for tender submissions
 - Regional packages awarded on quality, method statement and cost criteria
- 

Undertaking of surveys

The approved TRICS data collection contractors awarded the regional package of surveys then make preparations for the counts, which are undertaken during the period specified within the tender document. At the same time, supporting site, development and parking information is also gathered.



Data supply, input and validation

TRICS survey data is then forwarded to JMP using our standard data collection forms, and is subject to our data input and validation processes .

Once all validation points are answered the survey data is considered valid and is accepted into the database for its next software update.

