

June 2005

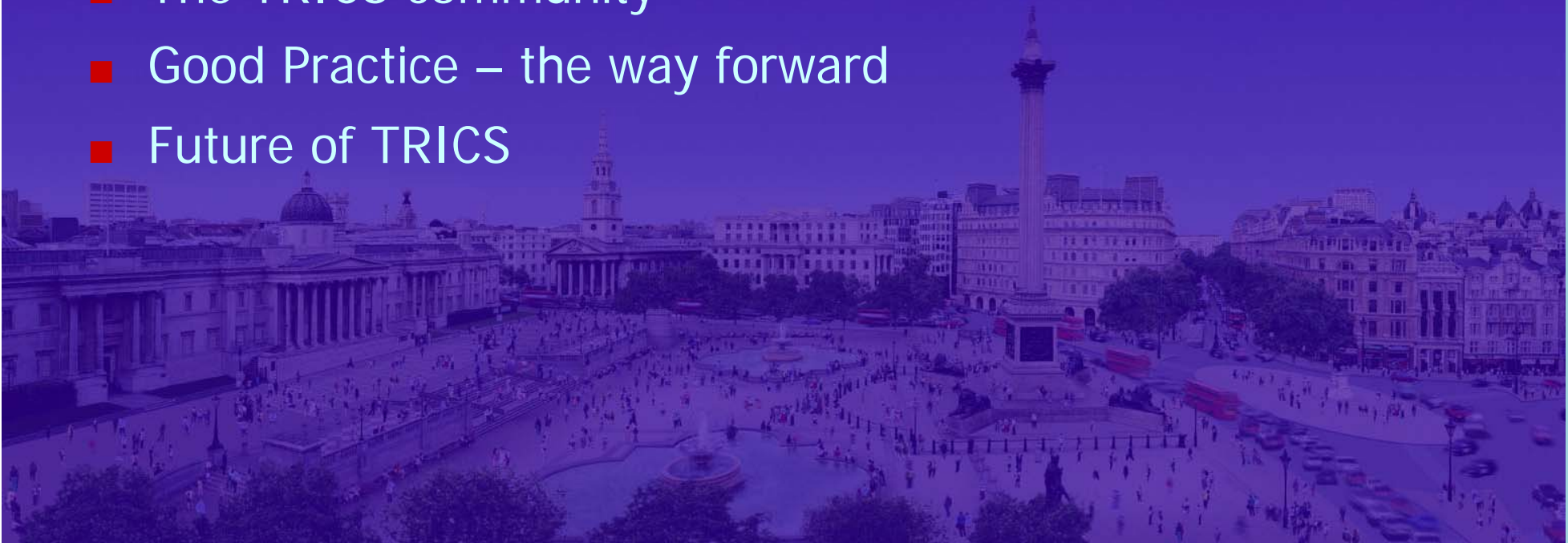
TRICS Role in Development Control

Andrew Milne
TRICS Consortium/
Ian Coles
TRICS Data & Systems Co-ordinator



TRICS Role in Development Control

- Facts and figures
- The organisational structure
- Main functions of the software
- Addressing multi-modal issues
- TRICS – more than just a database
- The TRICS community
- Good Practice – the way forward
- Future of TRICS



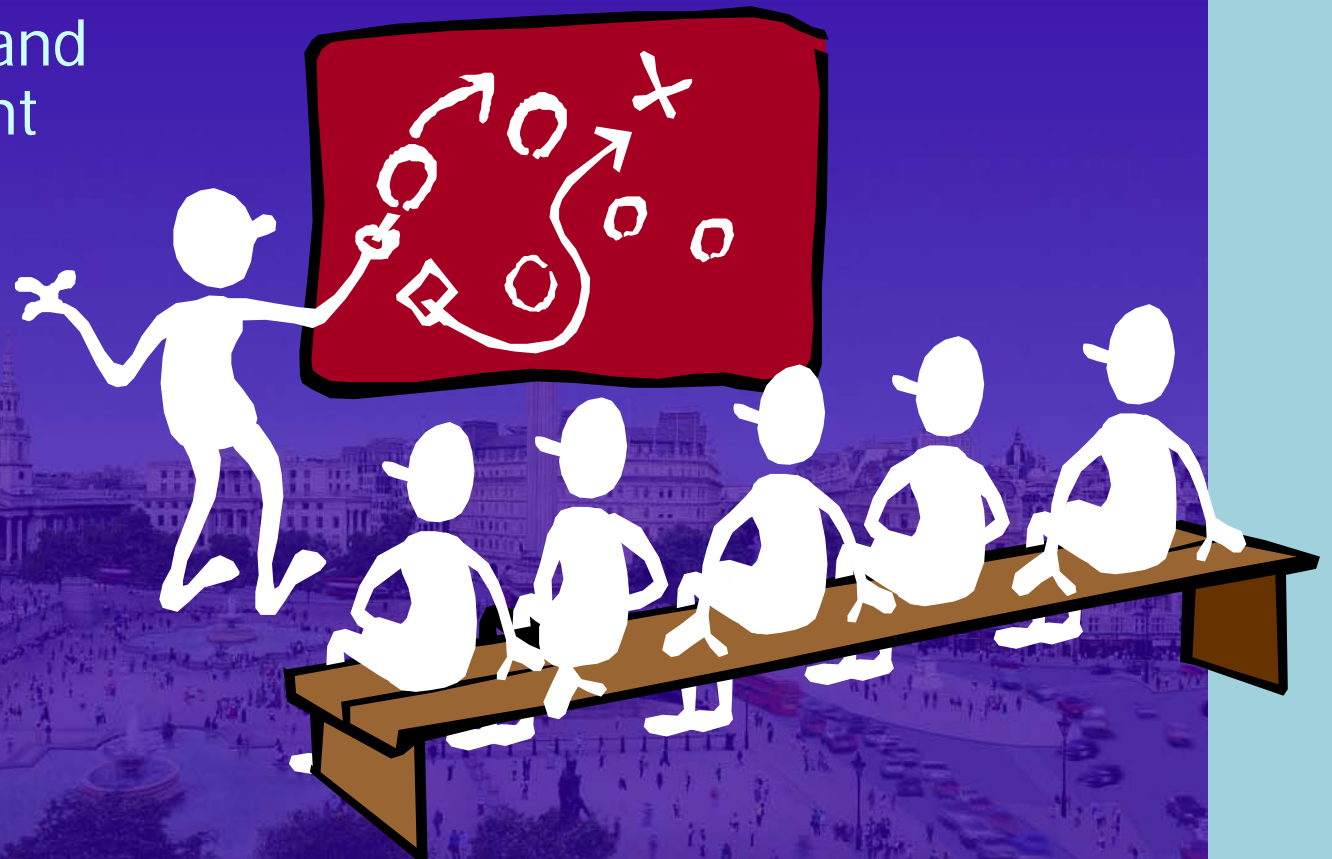
TRICS – Facts and figures

- Leading trip generation database in UK and Ireland
- Available since 1989
- 254 member organisations
- Over 4,700 transport surveys
- 98 separate land use categories
- 2 software updates per year (June and December)
- Current version 2005(b) – June 2005



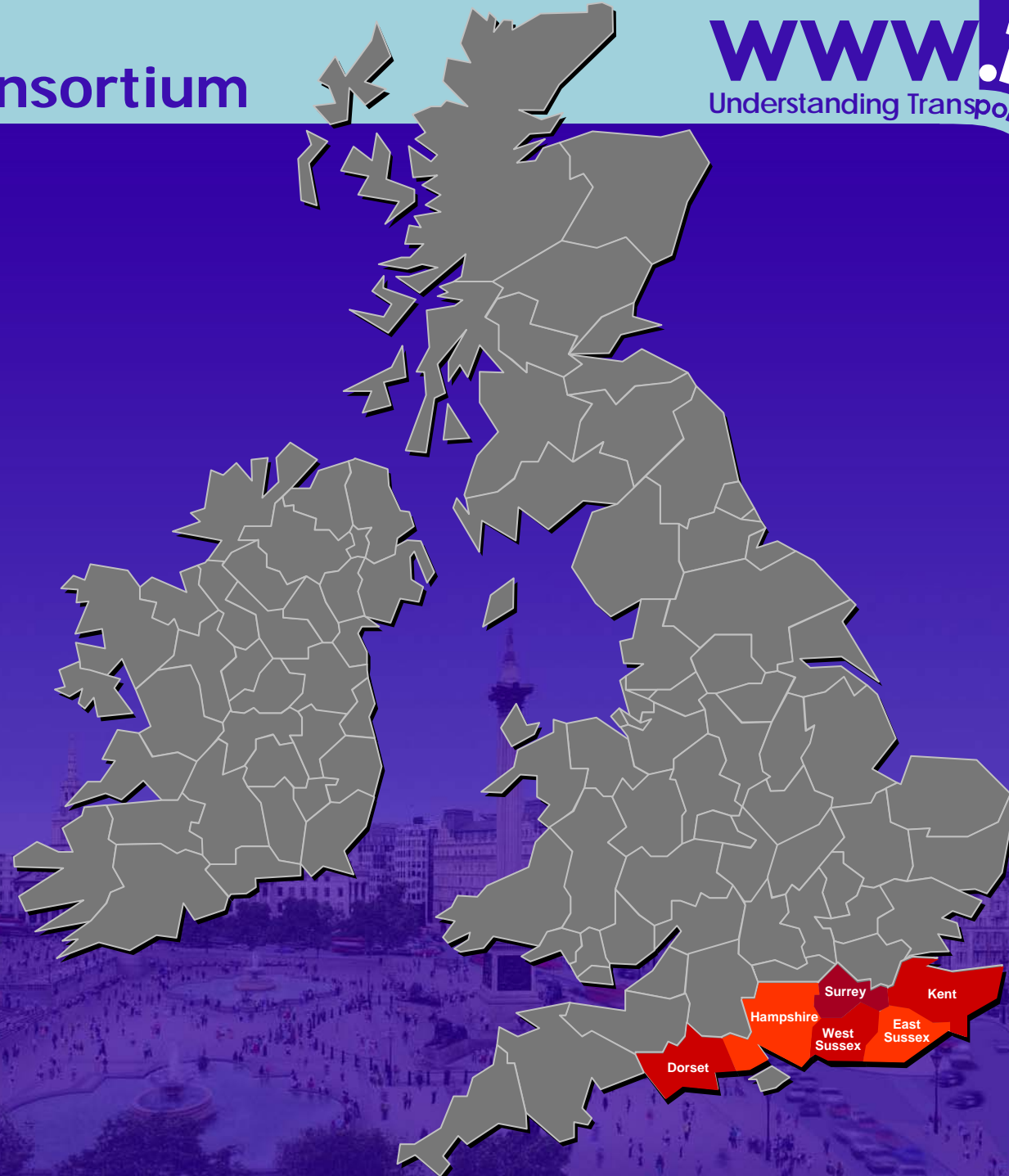
TRICS – The organisational structure

- Owned by a consortium of 6 County Councils
- JMP Consulting are project marketing and management consultants
- Management Group Meetings every 3 months
- Constant feedback and product development

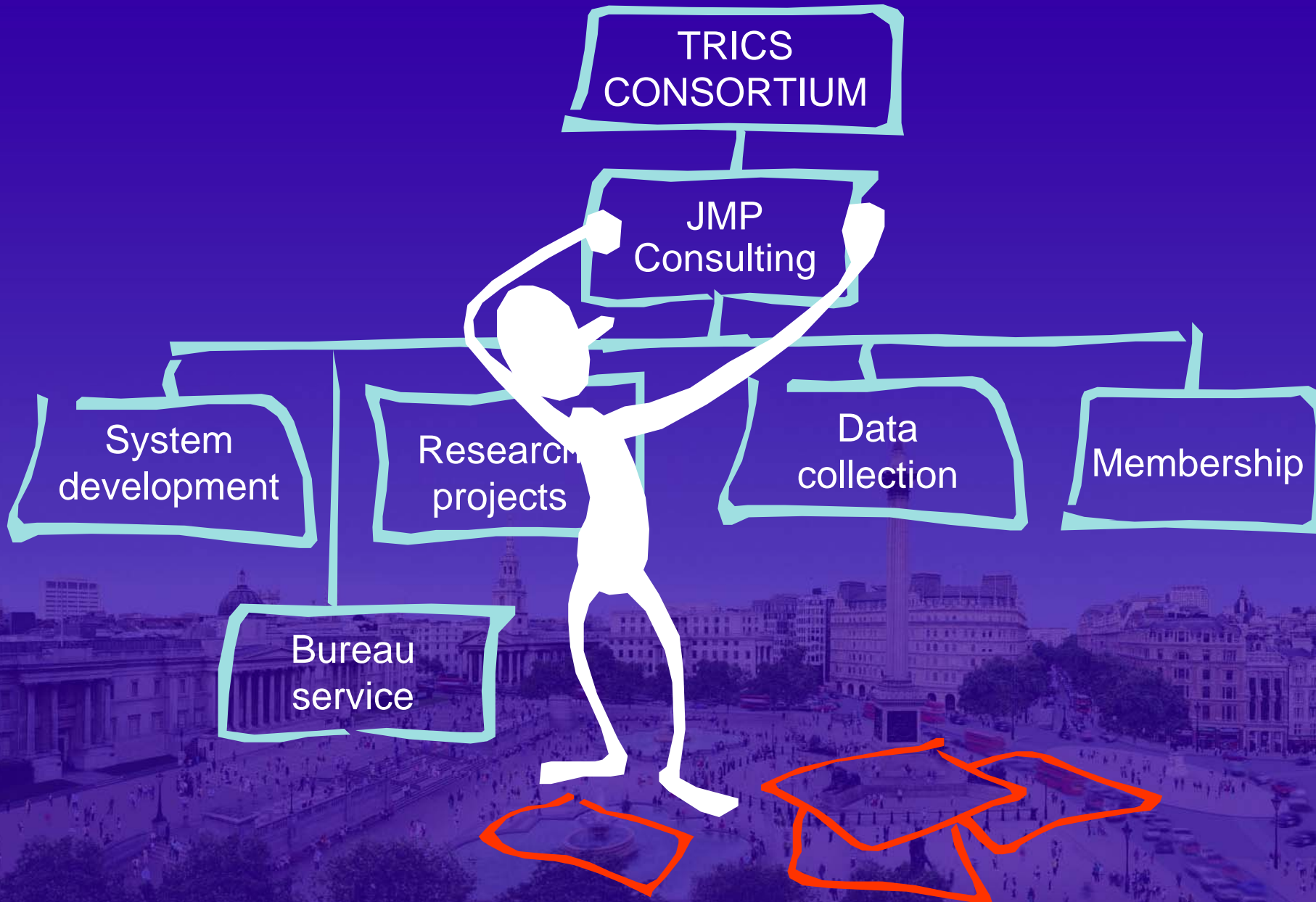


TRICS – The Consortium

- Dorset
- East Sussex
- West Sussex
- Hampshire
- Surrey
- Kent



TRICS – Organisational structure

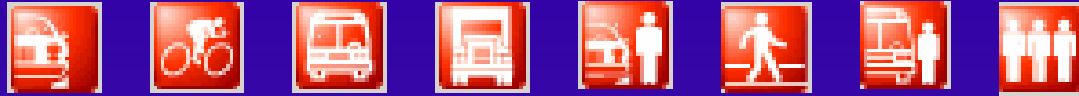


Main functions of the software

- TRICS is an integral part of the Transport Assessment process, playing a key role in the production and analysis of transport impact for proposed developments. It is widely used by planners and development controllers.
- Trip rate data analysis & retrieval
- Detailed extensive site & development information
- Facility to filter data using several criteria
- Mean trip rates/hour for arrivals, departures & totals
- Rank order trip rates for selected data sets
- Graphical representations



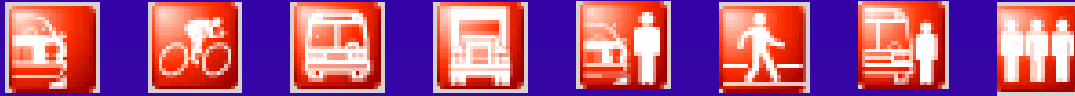
Addressing multi-modal issues



- Multi-modal surveys started in 2000
- Version 2005(b) now contains 241 multi-modal counts
- 100 multi-modal surveys programmed in 2005
- Key land uses:
 - Retail
 - Employment
 - Residential
 - Education
 - Health
 - Leisure



Addressing multi-modal issues



- Multi-modal trip rate calculations by:
 - Vehicle
 - Vehicle occupant
 - Cyclist
 - Pedestrian
 - Public transport user
 - Total people



TRICS – More than just a database

- Professional club for those interested in understanding the relationship between transport & development
- Annual user meetings and system feedback questionnaires
- Training courses available on-site or at JMP offices
- System demonstrations for non-members available
- University lectures to students
- Programme of research projects
- Annual TRICS Conference – 17th year!



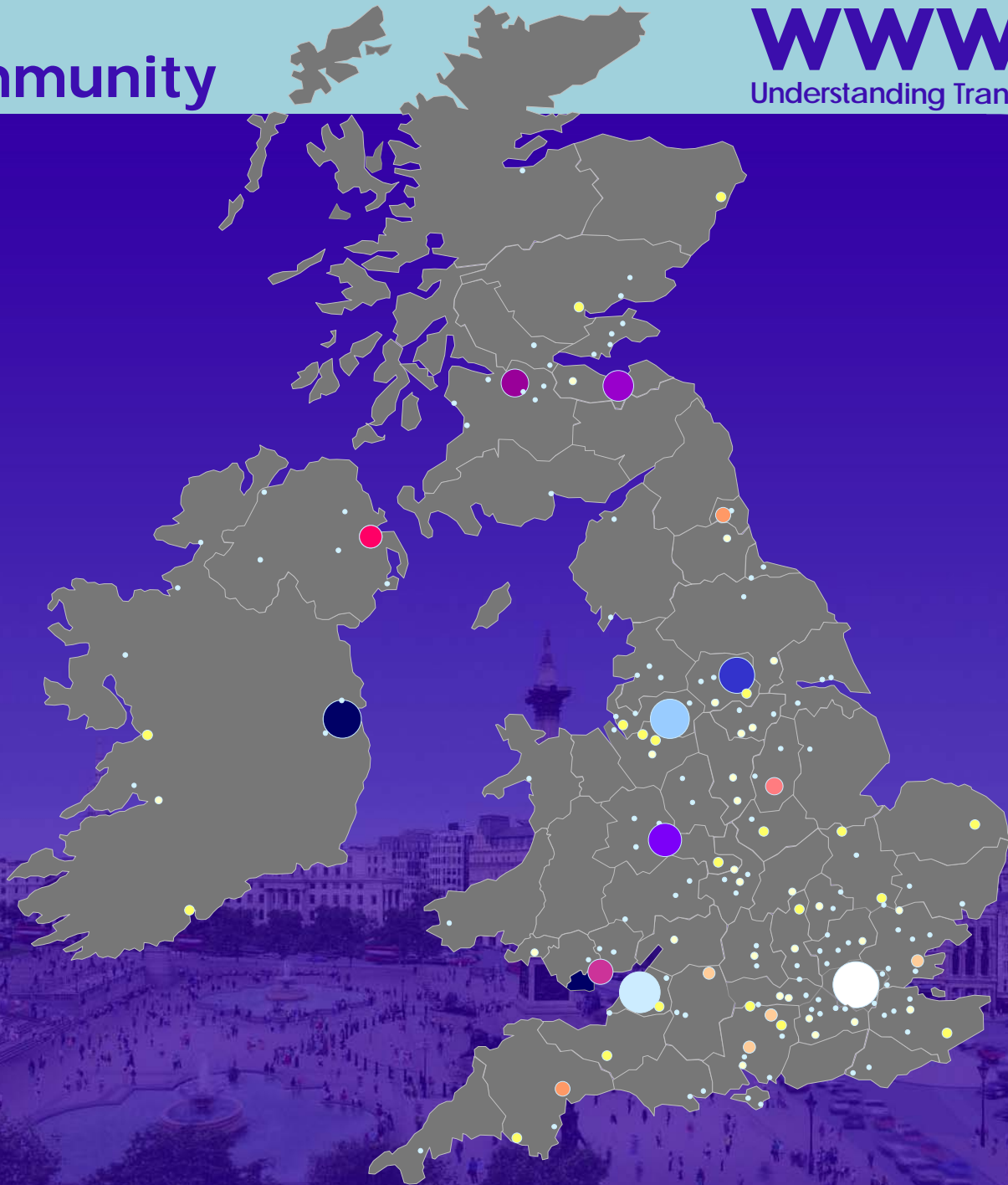
The TRICS community

- 254 member organisations across UK and Ireland
- 31 new members joined last year
- Local authorities, consultants, government bodies, universities
- Interest from overseas



The TRICS community

Total number of sites



Current TRICS licence options

- Single User: Single PC installation at one office address
- Small Business: Unlimited PC installation at one office address
- Corporate: Unlimited PC installation at a number of separate office addresses



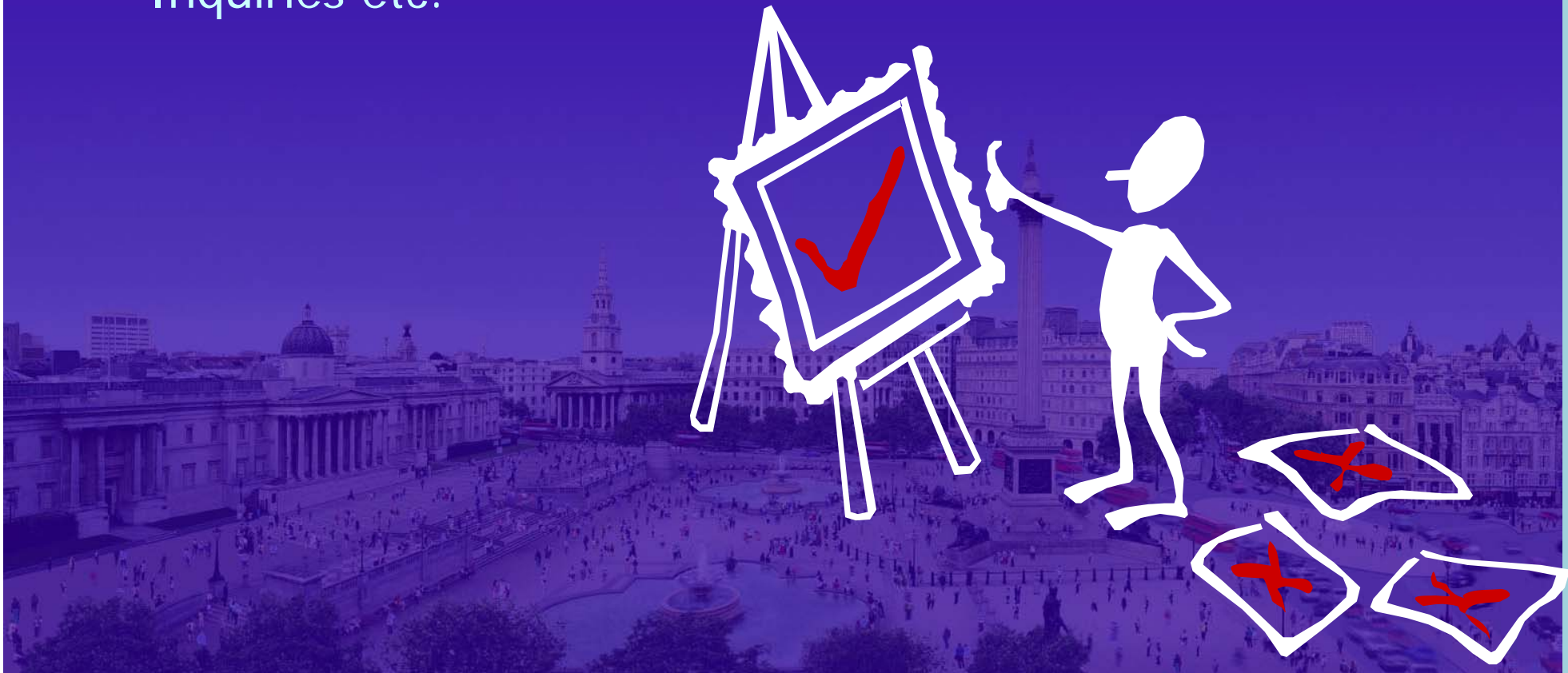
Current TRICS licence fees

- Single User: £1,850 per annum
- Small Business: £2,250 per annum
- Corporate: Prime site: £2,450 per annum
Subsequent sites 2 to 6: £1,600 per annum
Subsequent sites 7+: £1,100 per annum



Good Practice – the way forward

- 2005 TRICS Good Practice Guide available at www.trics.org
- Guide deals with production of data and auditing data supplied by another party
- Likely to be used alongside data in evidence at Public Inquiries etc.



Good Practice Guide 2005 – some subjects covered

- Proving your case
- Re-tracing the footsteps (from others supplying data)
- How to spot unrepresentative surveys
- Using older TRICS data
- Weighting factors in trip rate calculations
- Data extrapolation limitations
- Using 85th and 15th percentile trip rates



Future of TRICS

- Continuous development of software
- Development of interactive website
- TRICS UK standard for monitoring TDM

